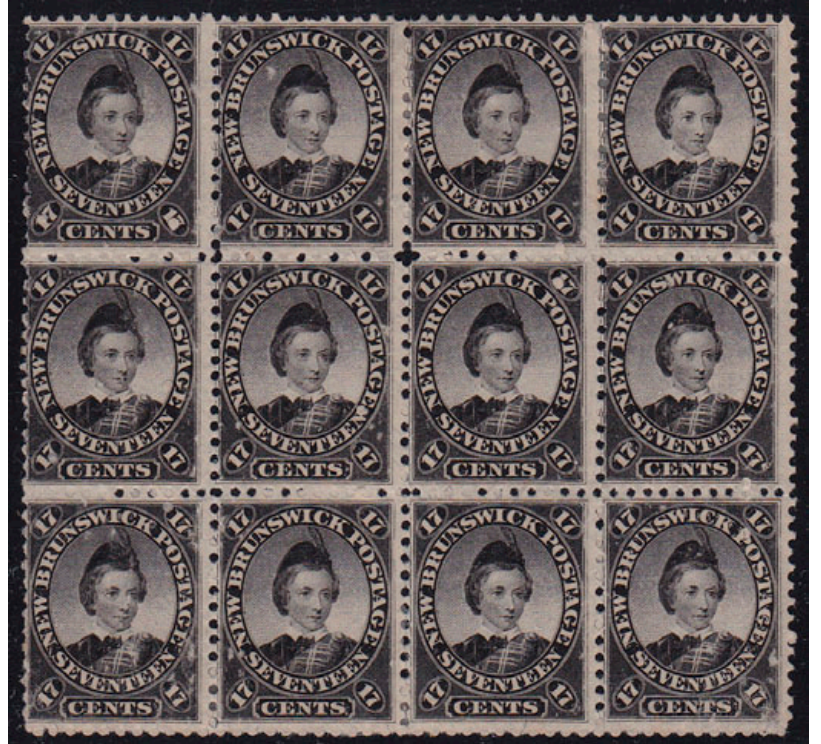


Morrell Stamps



4201



4206



4200



4202



4203



4204



4205



4215



4211



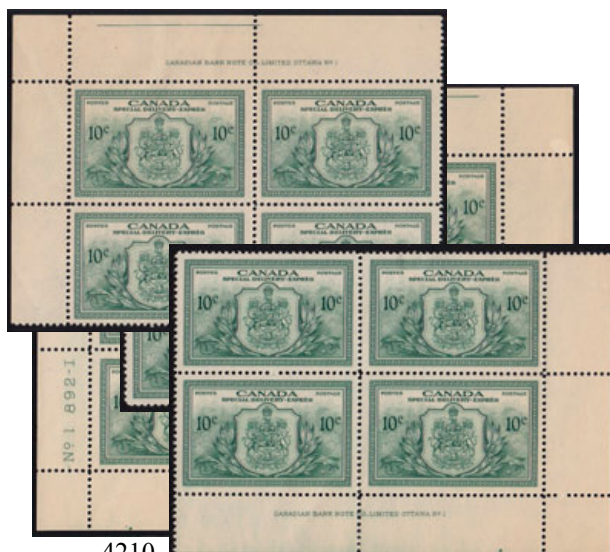
4009



4216



4208



4210

Provinces

lot #	condition	Can \$	US \$
4200	⊙ BC 2 faulty, illegible cancel, CV\$150	C\$ 50.	US\$ 50.
4201	⊙ BC 2a VG, pale rose, tied to piece by scarce New Westminister cancel, CV\$150+	C\$ 200.	US\$ 200.
4202	⊙ BC 5 F+, tiny thinning, very nice, CV\$200-350	C\$ 200.	US\$ 200.
4203	⊙ BC 7 VG-F, faulty, CV\$?	C\$ 50.	US\$ 50.
4204	Unused group of three faulty, BC 7 VG stained, BC 8 VG NG pinholed, BC 8 right wing corner off, CV\$280+	C\$ 250.	US\$ 250.
4205	★ BC 18 Mint LH F, perf 12-1/2, faulty, noted does not detract gummed over horizontal broken crease, CV\$1200 for no gum	C\$ 950.	US\$ 950.
4206	★ NB 11 Block of 12 Mint LH F, some gum disturbance from album adhesion, scarce multiple, CV\$300+	C\$ 350.	US\$ 350.

Canada

lot #	condition	Can \$	US \$
4208	★ Canada 192i, Blk/9 MNH F, broken 'E' in centre stamp, Darnell 184a, CV\$200+	C\$ 200.	US\$ 200.
4209	★ Canada C1a UR PB MNH VF, 'swollen breast' position 04 plate 02, part inscription reads '15-A' on upper selvage, LH on selvage only, CV\$500 for Blk/6	C\$ 375.	US\$ 375.
4210	★ Canada E11 MNH F-VF, MS PB, plate 01, CV\$132	C\$ 100.	US\$ 100.
4211	★ Canada F3 MNH F-VF, dull blue, NG, top left tear repaired clean, CV\$500	C\$ 400.	US\$ 400.
4215	★ Canada MR5 Blk/8, MNH G-F, Die I, rose red, disturbed gum and fingerprint stain on one stamp, scarce, CV\$200	C\$ 200.	US\$ 200.
4216	★ Canada OC9 OHMS (4 hole) 8xC9, odd item, perf'd variety?, multiple impossible placement of OHMS perfs, est\$125	C\$ 125.	US\$ 125.

Are You Selling - We're Collectors Too.

From select singles and multiples to large collections of every type. At Morrell Stamps we are always acquiring stamps to add to our personal accumulations. We also have want lists from our other clients. As collectors ourselves, we know the effort that goes into this hobby. If the time has come to part with your stamps, let us help you realise their true value. We look forward to hearing from you.



U.S.A.

lot #	condition	Can \$	US \$
4225	★ USA 212 Mint LH, Philippines ovpt, no detectable wtrmrk, small thin along top perf tips does not detract, CV\$350	C\$ 300.	US\$ 300.
4226	★ USA 217 Mint VLH, FOG, Philippines ovpt, CV\$40	C\$ 40.	US\$ 40.
4227	★ USA 218 Mint VLH, FOG, Philippines ovpt, CV\$40	C\$ 40.	US\$ 40.
4228	★ USA Hawaii 30 (1864-75) Mint LH F+, FOG, CV\$11	C\$ 10.	US\$ 10.
4229	◎ USA Hawaii 31 LH F+, CV\$20+	C\$ 16.	US\$ 16.
4230	★ USA Hawaii 32 Mint VLH F, FOG, CV\$175	C\$ 160.	US\$ 160.
4231	★ USA Hawaii 33 Mint VLH F, FOG, CV?	C\$ 45.	US\$ 45.
4232	Unused USA Hawaii 34, F, NG, CV\$35 used or \$90 for MNH	C\$ 70.	US\$ 70.
4233	★ USA Hawaii 36 Mint VLH FOG F, nice, CV\$65	C\$ 65.	US\$ 65.
4234	★ USA Hawaii 37 Mint VLH F, light gum disturbance, CV\$11	C\$ 10.	US\$ 10.
4235	★ USA Hawaii 45 (1882-85) Mint FOG VLH F+, 20th stamp of Hawaii, CV\$42.50	C\$ 40.	US\$ 40.
4236	Unused USA Hawaii 58? F, CV\$13	C\$ 10.	US\$ 10.
4237	★ USA Hawaii 62 Mint FOG LH F, CV\$12	C\$ 10.	US\$ 10.
4238	★ USA Hawaii 64 Mint FOG LH F+, CV\$32	C\$ 30.	US\$ 30.
4239	★ USA Hawaii 65 Mint FOG LH F, CV\$80	C\$ 65.	US\$ 65.
4240	★ USA Hawaii 67 Mint FOG LH F, CV\$20	C\$ 18.	US\$ 18.
4241	Unused USA Hawaii 68 F, NG, CV\$10	C\$ 10.	US\$ 10.
4242	★ USA Hawaii 70 Mint FOG VLH F, CV\$22.50	C\$ 20.	US\$ 20.
4243	★ USA Hawaii 71 Mint FOG VLH F, CV\$35	C\$ 35.	US\$ 35.
4244	◎ USA Hawaii 78 F, CV\$17.50	C\$ 15.	US\$ 15.
4245	◎ USA Hawaii 79 F, CV\$13	C\$ 10.	US\$ 10.
4246	◎ USA Q12 PP12 G- F, Philadelphia precancel, CV\$45 for normal	C\$ 30.	US\$ 30.

Support the Hobby - Use the Mail



4224



4217



4222



4218



4219



4223



4220



4221

Great Britain

lot #	condition	Can \$	US \$
4217	⊙ GB Sc# 88 type A40, original paper still stuck on back, cancel 'Jersey Jul 23 1881, early date, yr of issue, CV\$32US	C\$ 20.	US\$ 20.
4218	⊙ GB Sc# 89 A40, and 119 A62, and 126 A65, Manchester cancel, on piece, CV\$275	C\$ 200.	US\$ 200.
4219	⊙ GB Sc# 89 A40, and 126 A65, bag tag #4270, part stamps and blurry cancel not counted, on piece, CV\$135+	C\$ 150.	US\$ 150.
4220	⊙ GB Sc# 96 A44 pair, and 116 A59 pair, on piece, Birmingham cancel, on piece, CV\$ 325	C\$ 295.	US\$ 295.
4221	⊙ GB Sc# 119 x 2 A62, and 126 x 4 A62-65, Birmingham cancel, on piece, CV\$560	C\$ 500.	US\$ 500.
4222	⊙ GB Sc# 121 type A64, CV\$40	C\$ 25.	US\$ 25.
4223	⊙ GB Sc# 128 A66, and 138 A74, and 139 A75, Coleman St. cancel, shades?, on piece, CV\$190	C\$ 175.	US\$ 175.
4224	⊙ GB Sc# 130 A68, and 138 A74, and 139 A75, Coleman St. cancel, shades?, on piece, CV\$210	C\$ 125.	US\$ 125.

Morrell Stamps is proud to be associated by membership with these VF societies:

the Royal Philatelic Society of Canada, the Postal History Society of Canada, the British North American Philatelic Society, the Canadian Forces Philatelic Society and the American Philatelic Society.



4250



4249

Great Britain

lot #	condition	Can \$	US \$
4247	⊙ GB Sc# 130 A68, and 138 A74, possible wrinkle, on piece, picture on back cover, CV\$200+	C\$ 125.	US\$ 125.
4248	⊙ GB Sc# 130 A68, and 138 A74 single and pair, on piece, picture on back cover, CV\$140+	C\$ 100.	US\$ 100.
4249	⊙ GB Sc# 133 A70 pair, 138 A74 single and pair, on piece, CV\$190	C\$ 160.	US\$ 160.
4250	⊙ GB Sc# 133 A70 single and 133 A70 pair, cancels light and illegible, on two pieces, CV\$105	C\$ 75.	US\$ 75.
4251	⊙ GB Sc# 135 A66, and 138 A74, and 139 A75, Coleman St cancel, shades?, on piece, picture on back cover, CV\$210	C\$ 125.	US\$ 125.
4252	⊙ GB Sc# 138 A70 S/4 and 150 A74 pair, Glasgow cancel, on piece, picture on back cover, CV\$230	C\$ 200.	US\$ 200.
4253	⊙ GB Sc# 140 A76 carmine rose, and 127 or 143 Blk/4, Glasgow roller cancel, on piece, picture on back cover, CV#225++	C\$ 200.	US\$ 200.

Late Additions

Canada and Provinces

lot #	condition	Can \$	US \$
4254	★ Canada Officials (1949-50) MNH, missing O9, O2 VF, O6-8 VF, O10 F, O11 F-VF, E01 VF, picture on back cover, CV\$175	C\$ 150.	US\$ 150.
4260	★ Canada 119 MNH F, Moncton NB precancel, scarce, picture on back cover, CV\$?	C\$ 4.	US\$ 4.
4261	★ Canada MR1 pair, Mint LH F, green, disturbed gum, picture on back cover, CV\$16-70	C\$ 19.	US\$ 19.
4262	★ Canada MR3 Blk/4, F-VF FOG, one is MNH, three are LH, Die I, centred left, picture on back cover, CV\$95-120	C\$ 100.	US\$ 100.
4263	★ Canada MR3a MNH F, Die II, scarce, picture on back cover, CV\$300-\$750	C\$ 325.	US\$ 325.
4255	★ NFLD 82 MNH VF, CV\$35, not pictured	C\$ 40.	US\$ 40.
4256	★ NFLD C2 MNH F-VF, CV\$200-300, not pictured	C\$ 225.	US\$ 225.

U.S.A.

lot #	condition	Can \$	US \$
4257	★ USA Sheets & Postal Souvenirs, Celebrate the Century series, available 1930, 1940, 1950, 1960, 1970, 1980, 1990, each sold separately, CV12.95US for new, our price Can\$16 or US\$16 for each, not pictured	Can\$16 or US\$16 each	please specify decade

Literature

4258	Scott Stamp Monthly (new magazine style) 12 issues, incomplete set from 2003 to 2006, a few great issues, over 12 x \$6 = \$72 at news stand, subscription \$45, not pictured	C\$ 50.	US\$ 50.
4259	Stanley Gibson Stamp Monthly, available are 2003 oct. nov. dec., 2004 feb. mar. apr. jun. sep. oct. dec., 2005 feb. apr. may. jun. sep. oct. nov., each sold separately at \$10 per issue, please specify, not pictured	Can\$10 or US\$10 each	please specify months/year

For Abbreviations, Grading, Sales info, or Terms and Conditions see our Sales Circular or visit our website.

Morrell Stamps



4247



4248



4251



4253



4252



4261



4262



4254



4260

4263

We have many more stamps than are listed.

DO WE HAVE YOUR WANT LIST ??

Morrell Stamps PO Box 5241 Station B, Victoria, British Columbia, Canada V8R 1H0