

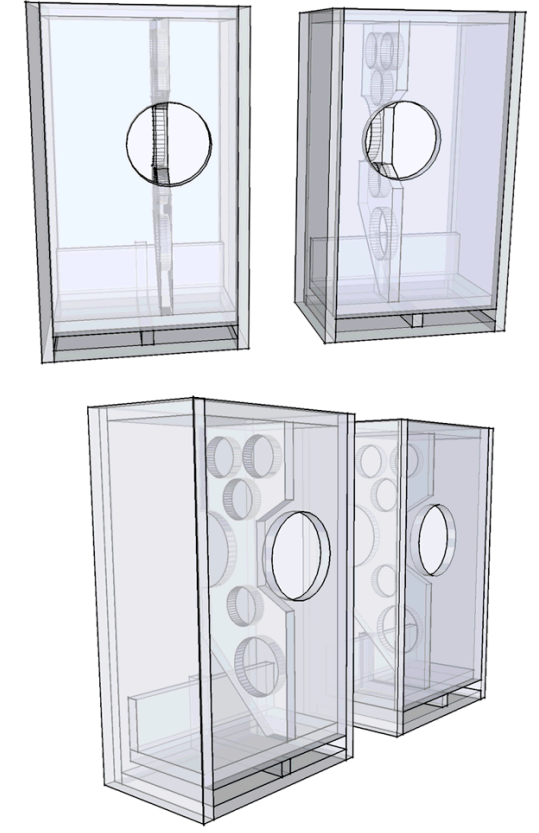
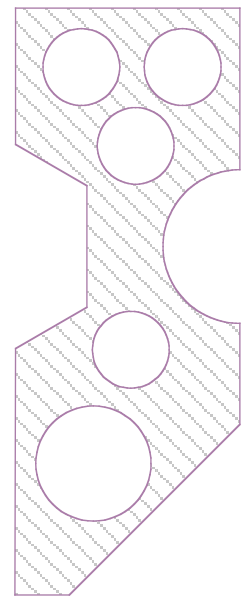
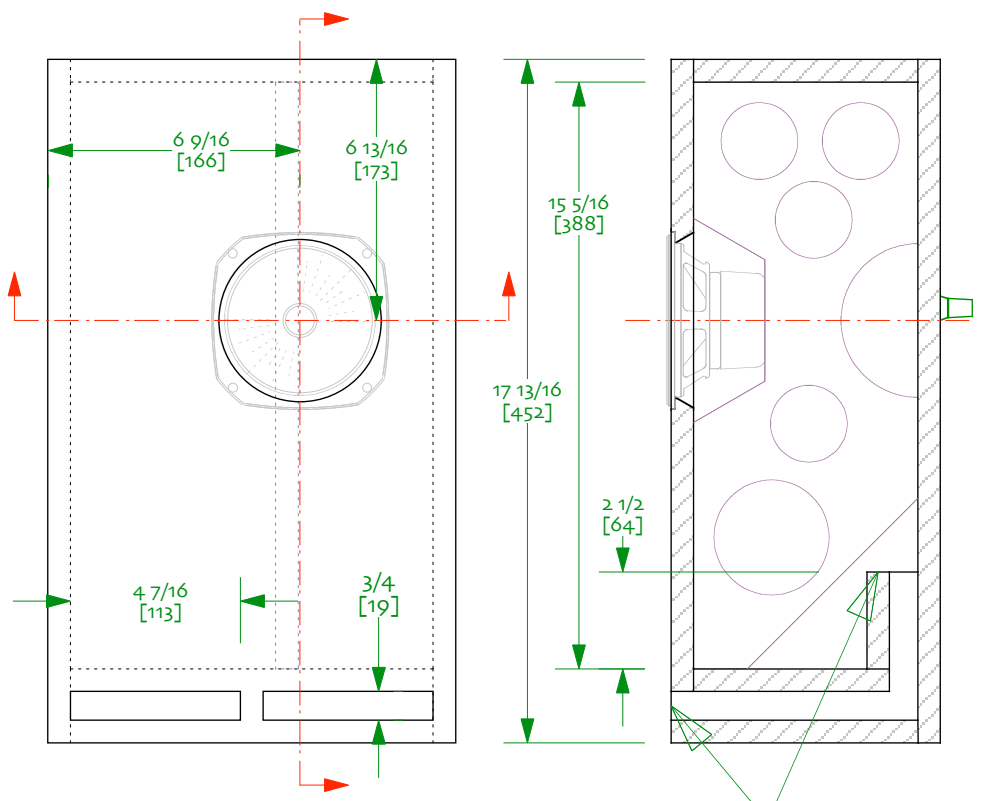
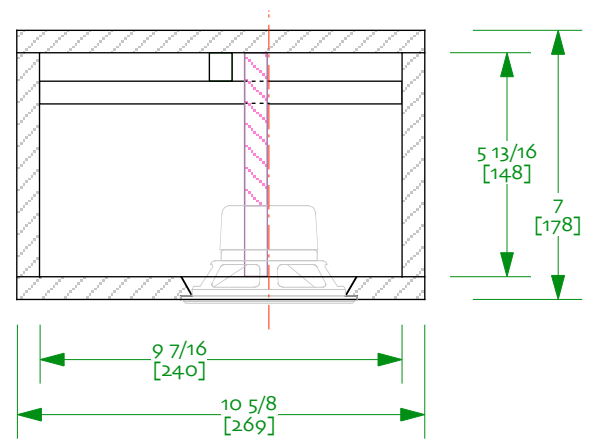


## Classic Fonken GR /FE127e ov6

© 2007 planet\_10 enterprises limited  
 01 - april -2007  
 designed & drawn by dld  
 free for non-commercial use only

### Notes:

- 0/ A classic Golden Ratio based derivative of the Fonken designed for modified Fostex FE127e, will work well with stock driver
- 1/ to be built as mirror imaged pairs
- 2/ All panels 5/8" (15mm)
- 3/ Ports are 3/4" (19mm) high and the width is defined by adding a 5/8" (15mm) solid spacers
- 4/ brace shape is only suggestive -- prime purpose is to brace driver, it needs to be about 35-40% holes. (ie if you have to mount a terminal cup in the middle, you'll want to make sure the brace allows clearance)
- 5/ Don't forget to angle cut the back of the driver cut-out to give it breathing room
- 6/ All internal panels lined with ~1/2" (12mm) wool felt (preferred), 3/4" (19mm) poly-fluff batting, or 1" (25mm) fiberglass Note that it is hard to get into the box after it is sealed up



port exit and entrance need roundover, an additional piece may be required on the bottom