

The Wilmslow Audio S360 kit for building the Radford Studio S360 design must surely rank as the Rolls Royce of loud-speaker construction kits. Two bass units in each cabinet in an acoustic transmission line, plus four mid range units and four tweeters giving 360° dispersion of fabulous quality sound.

Expensive? — maybe, but for the perfectionist, money well spent.

The S360 kit includes the 20 loudspeaker drive units needed for a stereo pair of enclosures, 2 crossover networks, drive unit mounting plates, wiring distribution boards, long fibre wool for the transmission line, etc. — in fact, everything except the wood for the cabinets.

The same high quality speaker drive units are used in the Studio 270 (14 units), the Monitor 180 (10 units) and the Studio 90 (6 units).

Radfords international reputation for painstaking engineering in the fields of electronics and acoustics is your guarantee of satisfaction with these fine speakers.

Studio 360:

Power handling 100 watts RMS.
Frequency range: 30 Hz – 25 kHz.
Size: 45" × 18 3/4" × 15".

Studio 270:

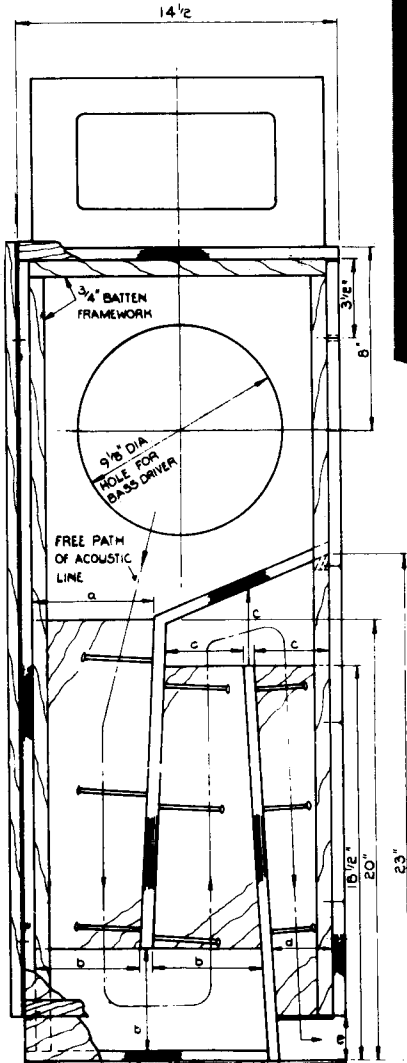
Power handling: 50 watts RMS.
Frequency range: 40 Hz – 25 kHz.
Size: 38" × 17 1/2" × 12 1/2".

Monitor 180:

Power handling: 50 watts RMS.
Frequency range: 50 Hz – 25 kHz.
Size: 30" × 13 1/2" × 10 1/2".

Studio 90:

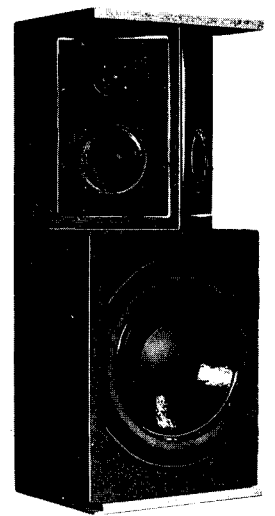
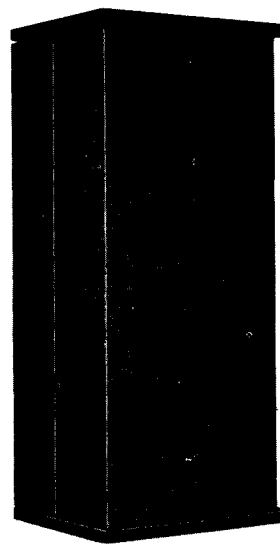
Power handling: 50 watts RMS.
Frequency range: 30 Hz – 25 kHz.
Size: 45 1/2" × 17" × 15".



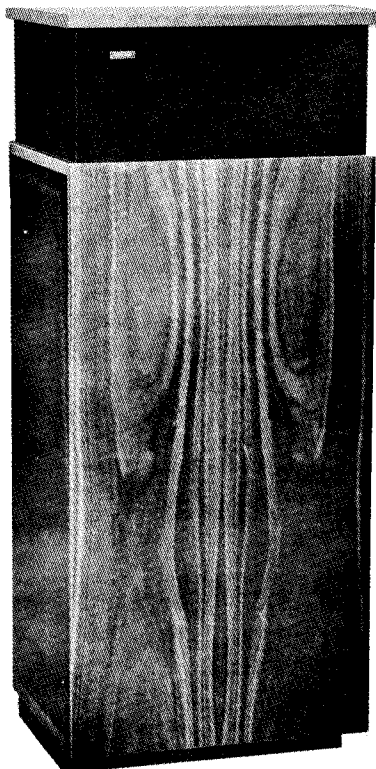
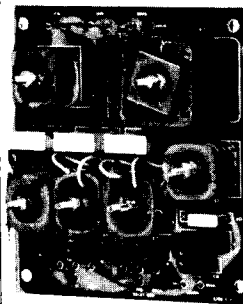
16 1/2" x 14" x 12" S W G STEEL STABILIZING PLATE FINISHED BLACK SCREWED TO CARCASE.

SIDE OF CARCASE, NOT REMOVABLE. DRAWN WITH SIDE REMOVED TO SHOW ACOUSTIC LINE SECTION.

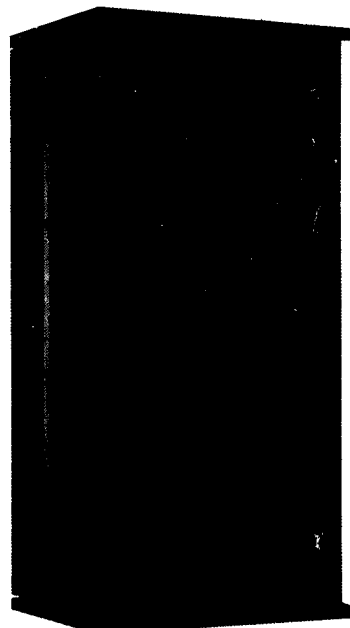
GENERAL ASSEMBLY
SIDE SECTION VIEW.



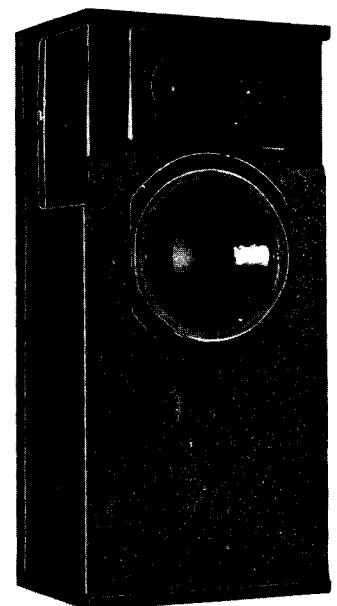
Monitor 180



Studio S.360

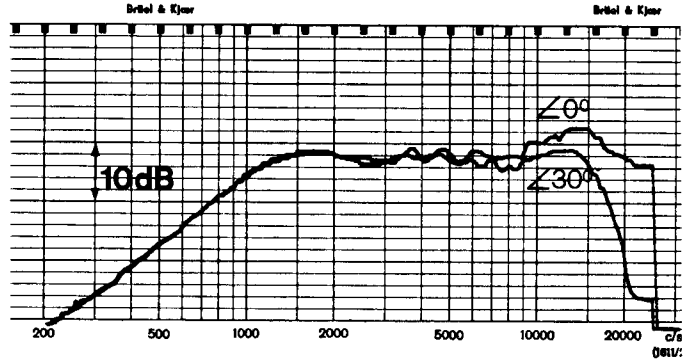
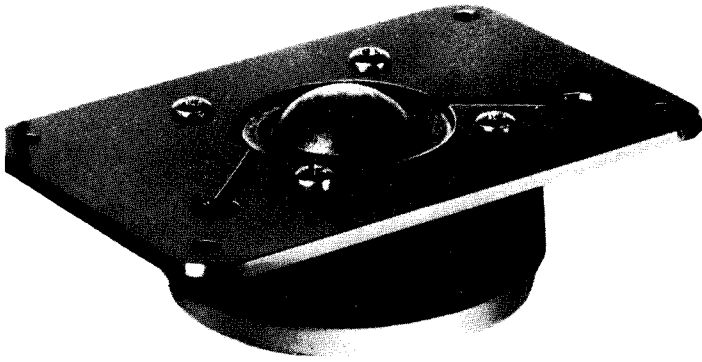


Studio 270





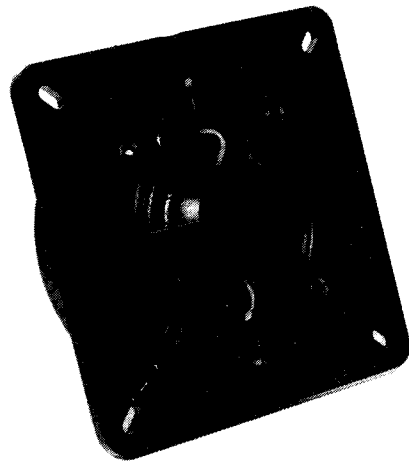
RADFORD



TD3. Dome Tweeter

Voice Coil wound onto aluminium former to withstand high power inputs.
Impedance: 4 or 8 ohms.

Voice Coil diameter: 25 mm.
Frequency range: 1,500–20kHz.
Resonance: 1,000Hz.
Size: 80 × 115 × 27 mm deep.



BD25 Mk. II. Bass Unit

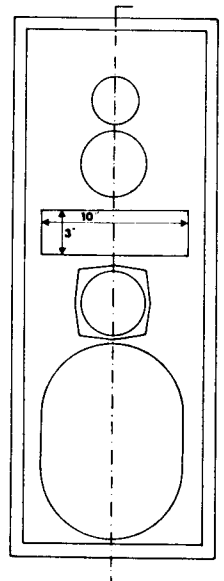
Frequency response: 20Hz–1kHz.
Impedance: 4 or 8 ohms.
Free air resonance: 30Hz.
Diameter: 10".

MD6. Dome Mid Range (sealed back)

Frequency response: 250Hz–6kHz.
Impedance: 4 or 8 ohms.
Free air resonance: 40Hz.

Wilmslow Audio offer Complete Kits for all the better magazine designs

- Practical HiFi and Audio PRO9TL (Rogers)
- Popular HiFi (Colloms)
- Wireless World Transmission Line (Bailey)
- HiFi Answers Monitor (Rogers)
- Practical HiFi and Audio Triangle (Giles)
- HiFi News State of the Art (Atkinson)
- HiFi News Tabor (Jones)
- Wireless World Book Shelf (Wilkinson)
- etc. etc.



Construction details or magazine article reprints are available for most designs
(send \$2 or equivalent)



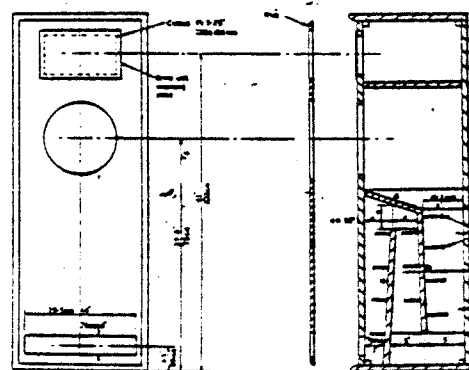
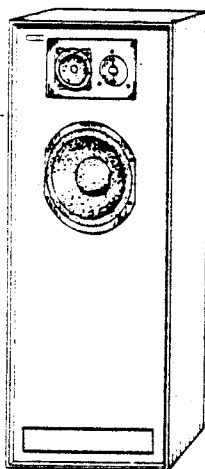
RADFORD

FORWARD FIRING LOUDSPEAKERS

The Radford bextrene loudspeaker drivers, crossovers, and enclosure designs benefit from the same low distortion and engineering excellence as the firms electronics test instruments. Radford is the choice of those who will not compromise and the Radford world wide reputation (and our guarantee) is your complete assurance of satisfaction.

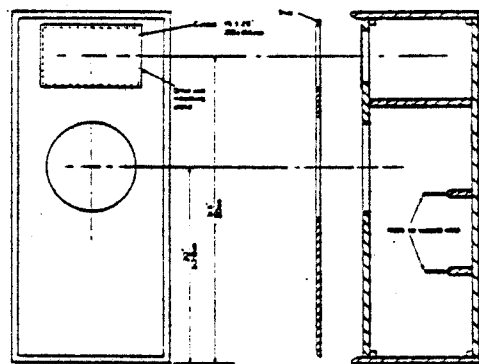
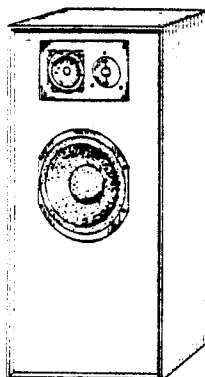
STUDIO S.90

A floor-mounting loudspeaker of suitable height without a stand for optimum listening satisfaction. Uses same units as the MONITOR and AUDITORIUM loudspeakers. Bass driver is rear-loaded with an open end acoustic transmission line which extends the flat response down to 30Hz. A loudspeaker with the highest possible performance for medium to large rooms. Provides a clean response over the whole audio frequency band from below to above audibility. Frequency range: 30Hz-25kHz. Power handling capacity: 50 watts. Size: 45½"×17"×15" (115×43×38cm). Weight: 98lb (44.5kg).



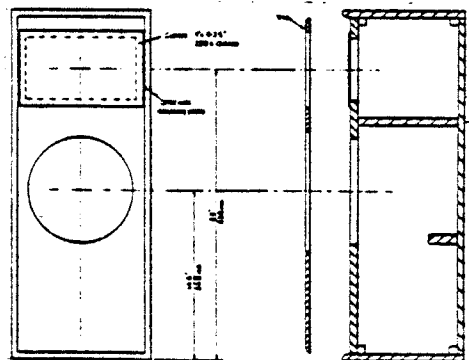
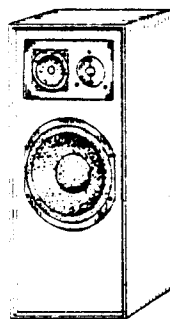
AUDITORIUM A.90

A floor-mounting loudspeaker (preferably on suitable stand) using the same units as the MONITOR but having larger enclosures for both bass and mid-range units. For medium and large rooms with enough space, this loudspeaker will provide a substantial low frequency response in addition to smooth and relaxed mid and high frequencies. Frequency range: 40Hz-24kHz. Power handling capacity: 50 watts. Size: 36"×16"×13" (91×40.5×33cm). Weight: 70lb (32kg).



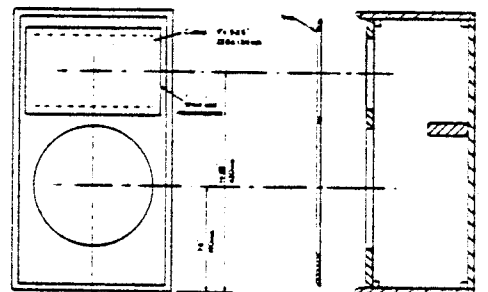
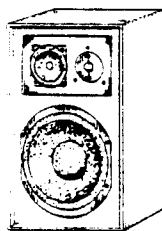
MONITOR M.90

Intended for floor mounting, preferably on a suitable stand. Uses three drivers. The mid-range driver is of the open back type which operates in a separate enclosure from the bass driver. This is a full range loudspeaker remarkably free from colouration with small freestanding dimensions. Frequency range: 50Hz-25kHz. Power handling capacity: 50 watts. Size: 30"×12"×10½" (76×30.5×25.5cm). Weight: 43lb (19.5kg).



TRISTAR T.90

Uses three drive units: bass, mid-range and treble. The mid-range unit is a closed back type enabling it to operate in the same enclosure as the bass driver. This loudspeaker is intended to satisfy the requirement for a true high fidelity performance with very low colouration in a relatively small dimension. Frequency range: 55Hz-25kHz. Power handling capacity: 50 watts. Size: 21"×12"×9" (53×32×23cm). Weight: 33lb (15kg).



See FACT SHEETS on BEXTRENE and TRANSMISSION LINES

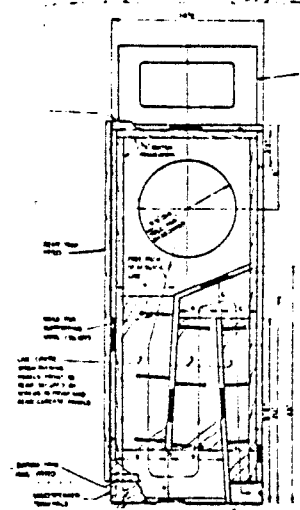
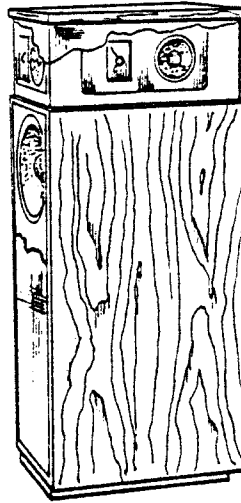


The Radford bextrene loudspeaker drivers, crossovers, and enclosure designs benefit from the same low distortion and engineering excellence as the firms electronics test instruments. Radford is the choice of those who will not compromise and the Radford world wide reputation (and our guarantee) is your complete assurance of satisfaction.

STUDIO 360

STUDIO 360° RADIATING LOUDSPEAKER, 10 drivers per unit. Two 10 in. long throw bextrene bass units firing into a transmission line enclosure while each of the four surfaces house a midrange and dome tweeter. A large room is required.

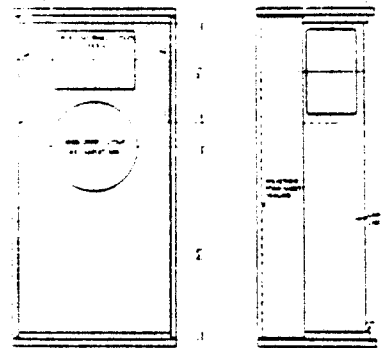
- Power handling = 100 watts RMS
- Frequency range = 30-25 kHz
- Size = 45" x 18 1/4" x 15"



STUDIO 270

STUDIO 270° RADIATING LOUDSPEAKER, 7 drivers per unit. A 10 in. long throw bextrene bass unit mounted in a sealed chamber while midrange and dome tweeter fire from each of three sides of the enclosure.

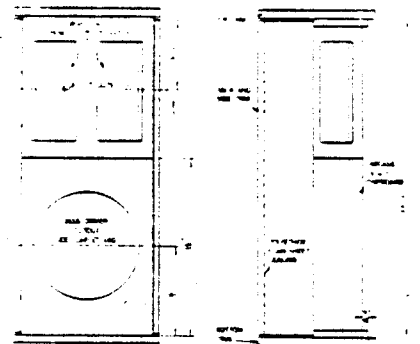
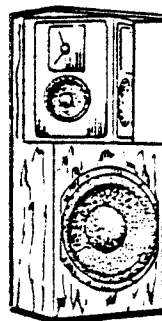
- Power handling = 50 watts RMS
- Frequency range = 40 Hz-25kHz
- Size = 38" x 17 1/4" x 12 1/4"



MONITOR 180

MONITOR 180° RADIATING LOUDSPEAKER, 5 drivers per unit. A 10 in. long throw bextrene bass unit mounted in a sealed chamber while a midrange and tweeter fire from each of two angled surfaces.

- Power handling = 50 watts RMS
- Frequency range = 50 Hz-25 kHz
- Size = 30" x 13 1/4" x 10 1/4"



See FACT SHEETS on BEXTRENE and TRANSMISSION LINES