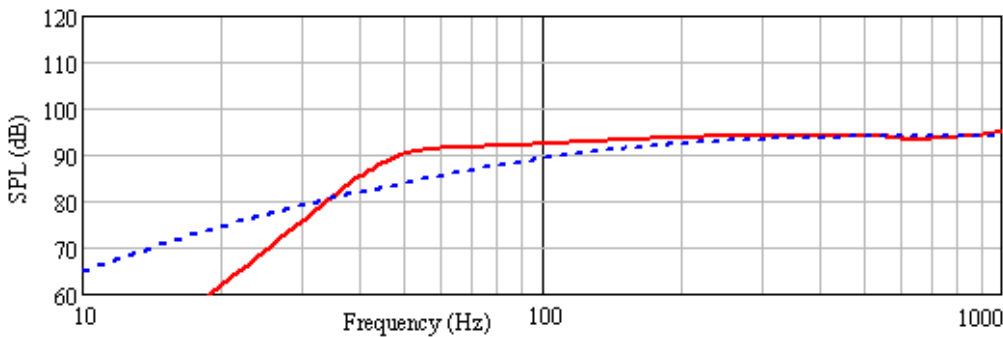
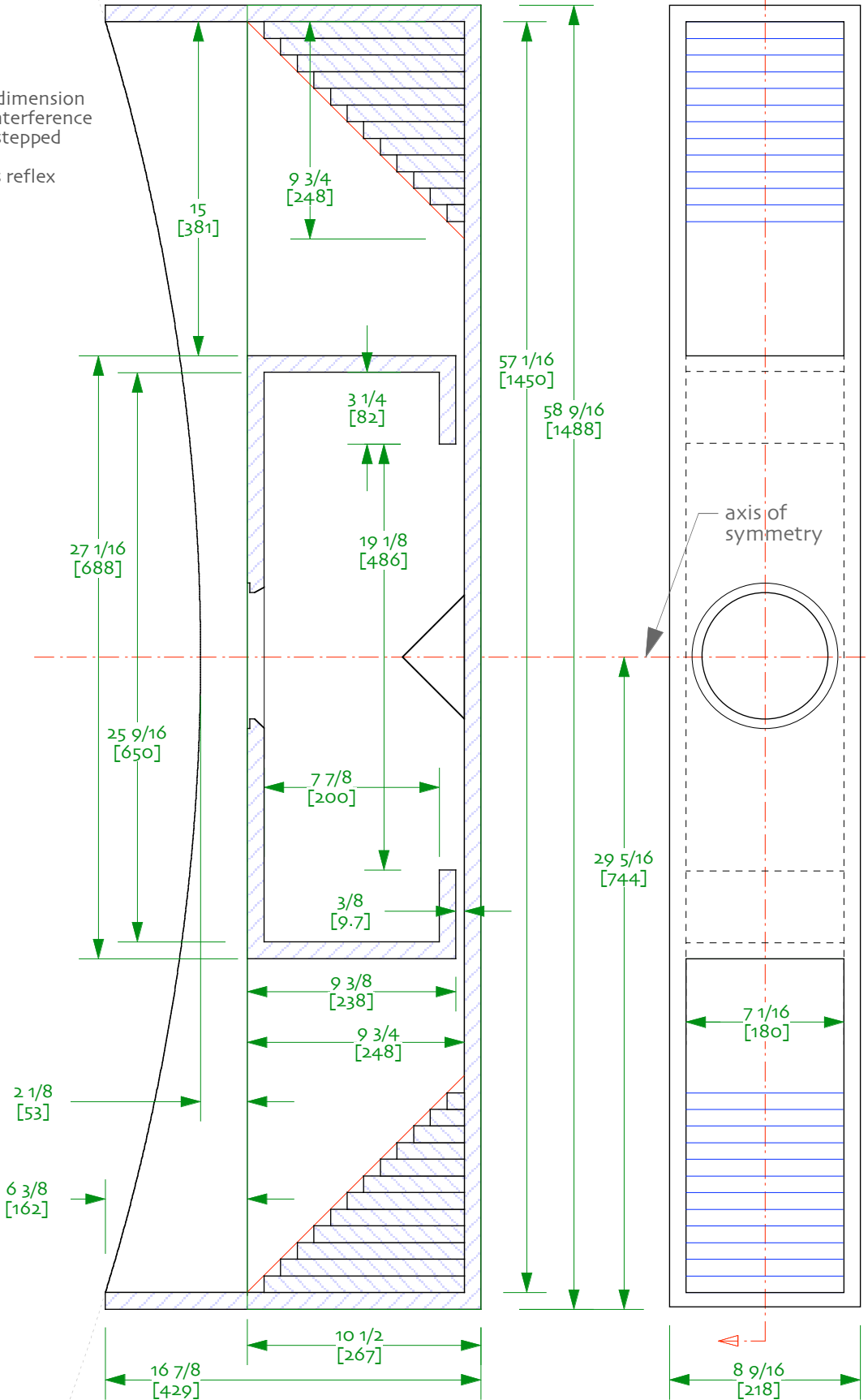
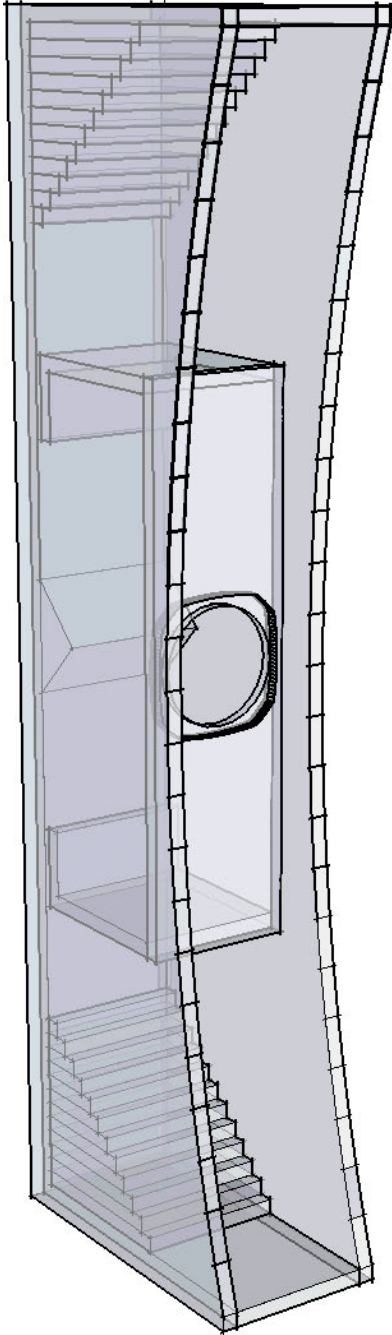


Notes:

- o/ drawn using 19mm material
- 1/ triangle at back of CC is of undetermined dimension -- its purpose is to combat port-to-port interference
- 2/ the mouth deflectors can be built using stepped strips or a single piece deflector
- 3/ damp main chamber as you would a bass reflex
- 4/ no bracing shown. It is recommended.
- 5/ diameter of cure is 194 7/8" (4950mm)



**VIKING**

KimChi Chang – Fostex FE167e Moose  
BVR/Double Mouth Horn 1v01

Sheet 0-- panel placement  
© 2007/2008 planet\_10 enterprises limited  
designed by Scott Lindgren/Ron Clarke  
drawn by dld / 2-january-2008 / 17-june-2008  
free for non-commercial use only