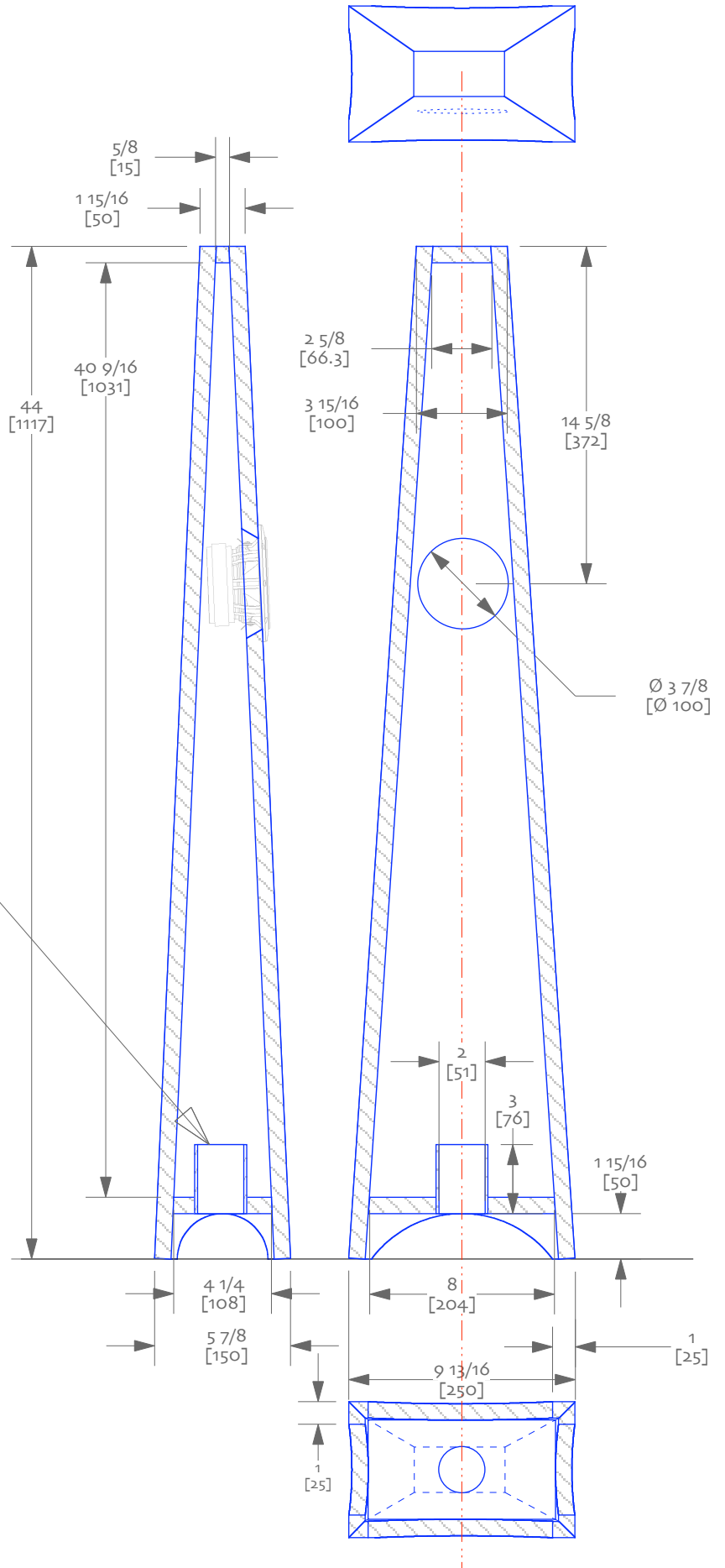


Notes:  
 1/ dimensions for 18mm Baltic Birch plywood  
 2/ line internal panel behind driver to reduce reflections. Use very little or no other damping in the box to taste.

2" (51mm) diameter, 3" (76mm) long port



**Metronome 1v1.01**  
 an ML-QQWT for the Fostex FE108eΣ  
 by Steve Cresswell  
 (with input by D Dlugos & S Lindgren)  
 31-August-06 / updated 28-august-2007  
 drawn by did