

# Austin A166 Mk II

by Ron Clarke



Notes:

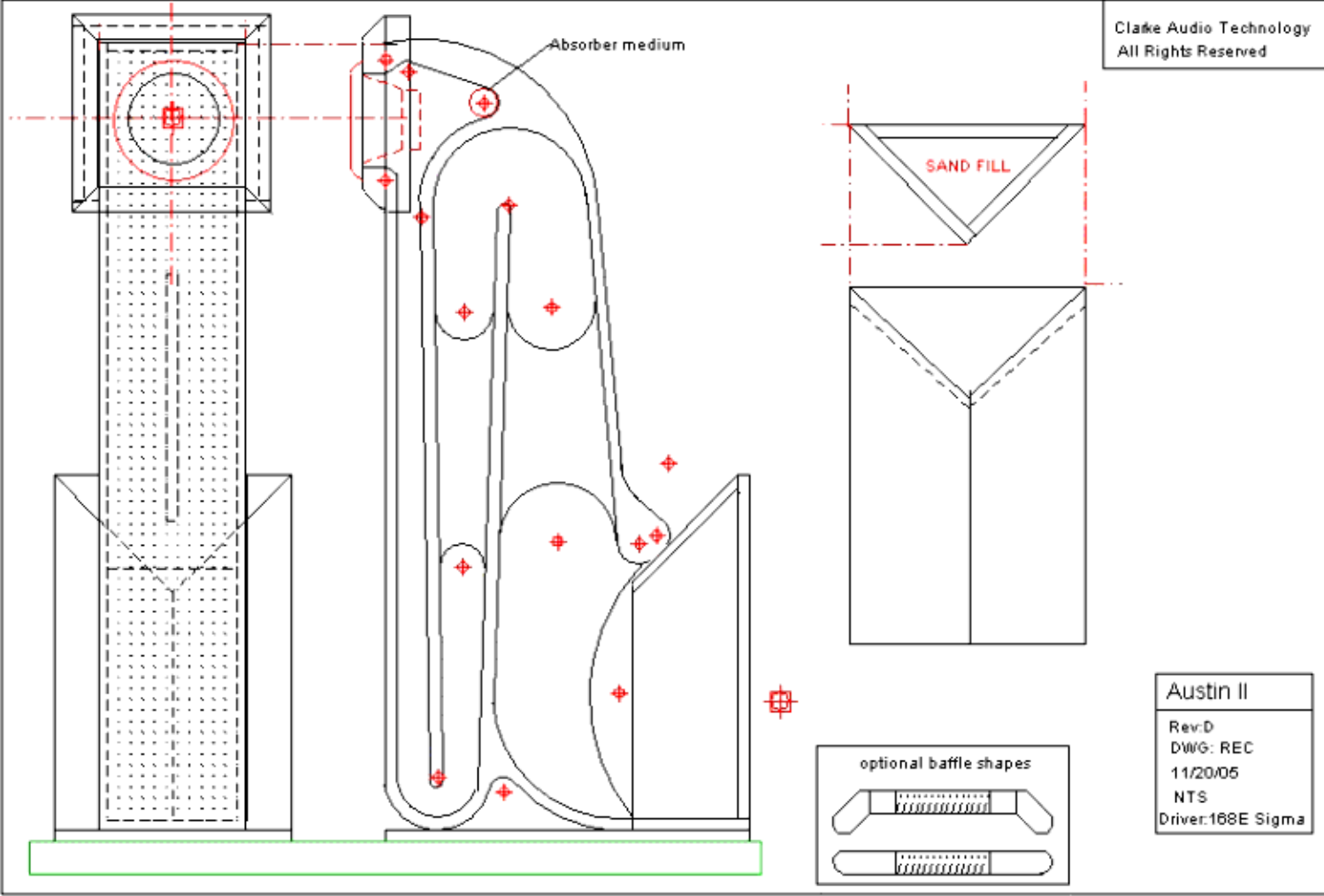
1) The baffle is not present in these drawings. It could be 12.7 (323mm) inches square, ~2.1 inches (57mm) thick (3 layers of 3/4 ~ 2.1 inches) with a 45 degree bevel and a 2 inch (50mm) extension around the perimeter facing rearward. (Added benefit, the remainders from the baffle beveling can be trimmed to make the 45 degree cleats in the first bend of the horn)

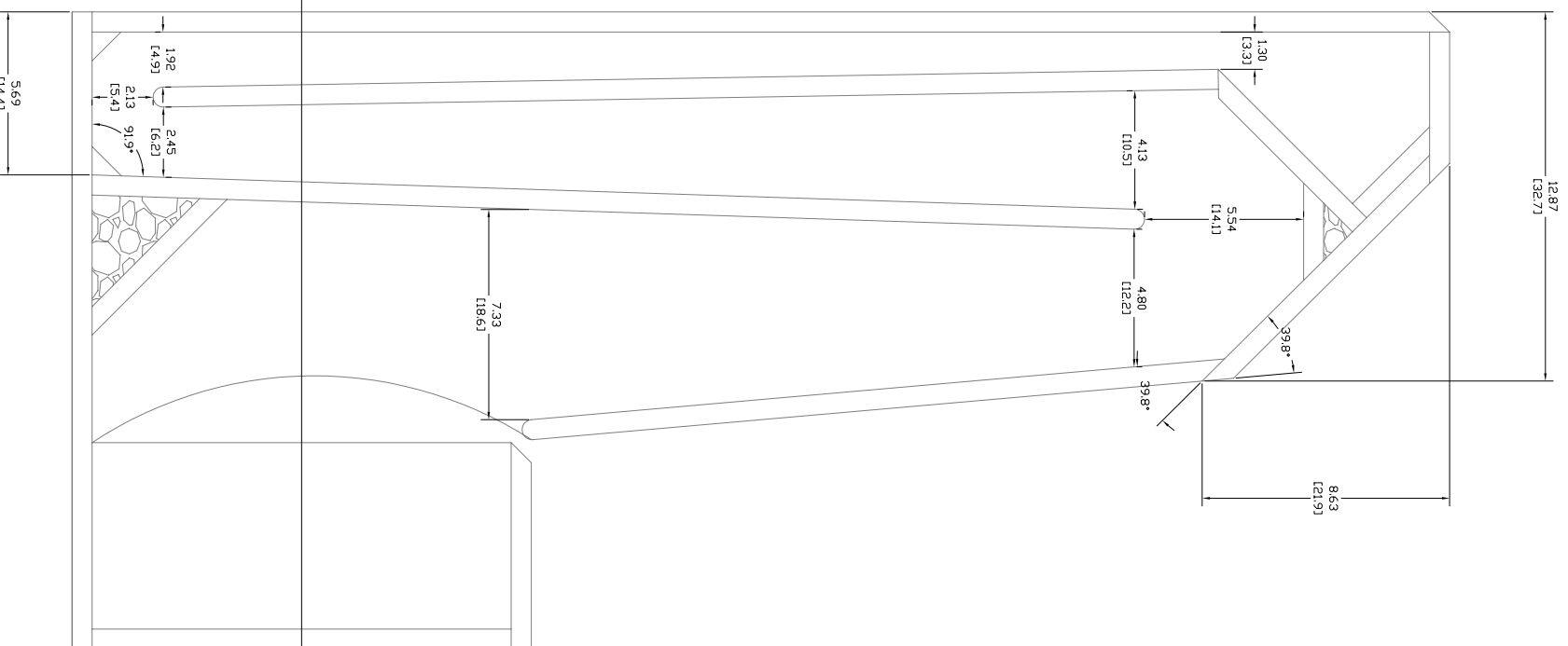
2) The second bend in Austin1.pdf has an error it should according to Ron: "I looked at the orig dwgs. Start of second 180 deg bend is 4.05" middle is 4.46" end is 4.72". This is the calculated expansion for that distance. There should be no "hump"."

3) It is convenient IMHO to construct the speaker and the deflector as two separate pieces. This adds one issue, the speaker becomes slightly front heavy with the driver and baffle sticking proud of it, I added a few inches of base sticking out to the front (with a slight .25 inch bevel to match the general look).

4) Getting the pieces of the horn as accurate as in the plans is difficult. I had no difficulty with getting the side I drew the plan on matched up but getting absolutely perfect 90s is hard on some of the interior pieces. An error of 1 degree is .13 inches. I would recommend cutting spacers of the exact width of the gap from the leftovers of the stuff cut to 7.9 inch (201mm) width (cut this all at once!!!) at different places (i.e. the throat and the bends) and clamping them in there while gluing to be certain of the geometry.







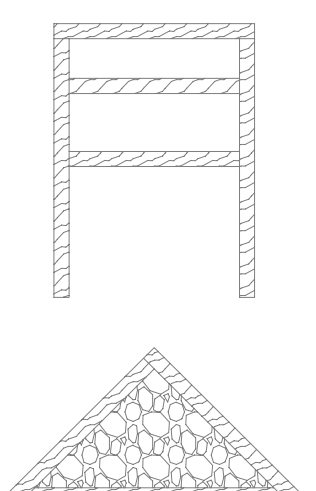
SIDE VIEW CROSS SECTION

SCALE: NTS



FRONT VIEW

SCALE: NTS



SECTION A-A'

SCALE: NTS

NOTES:

- 1) WOOD IS ASSUMED TO BE 0.7" (17.8mm) THICK. THIS IS STANDARD 3/4" PLY IN NORTH AMERICA.
- 2) UNSPECIFIED ANGLES ARE 90 OR 45 DEGREES

CONSULTANT:

PROJECT TITLE:  
AUSTIN REV G: BLH  
FOR FOSTEX FE166E

DRAWING TITLE:

SCALE: GRAPHIC SCALE:

DRAWN BY: CHECKED BY: LIST PLOT DATE:

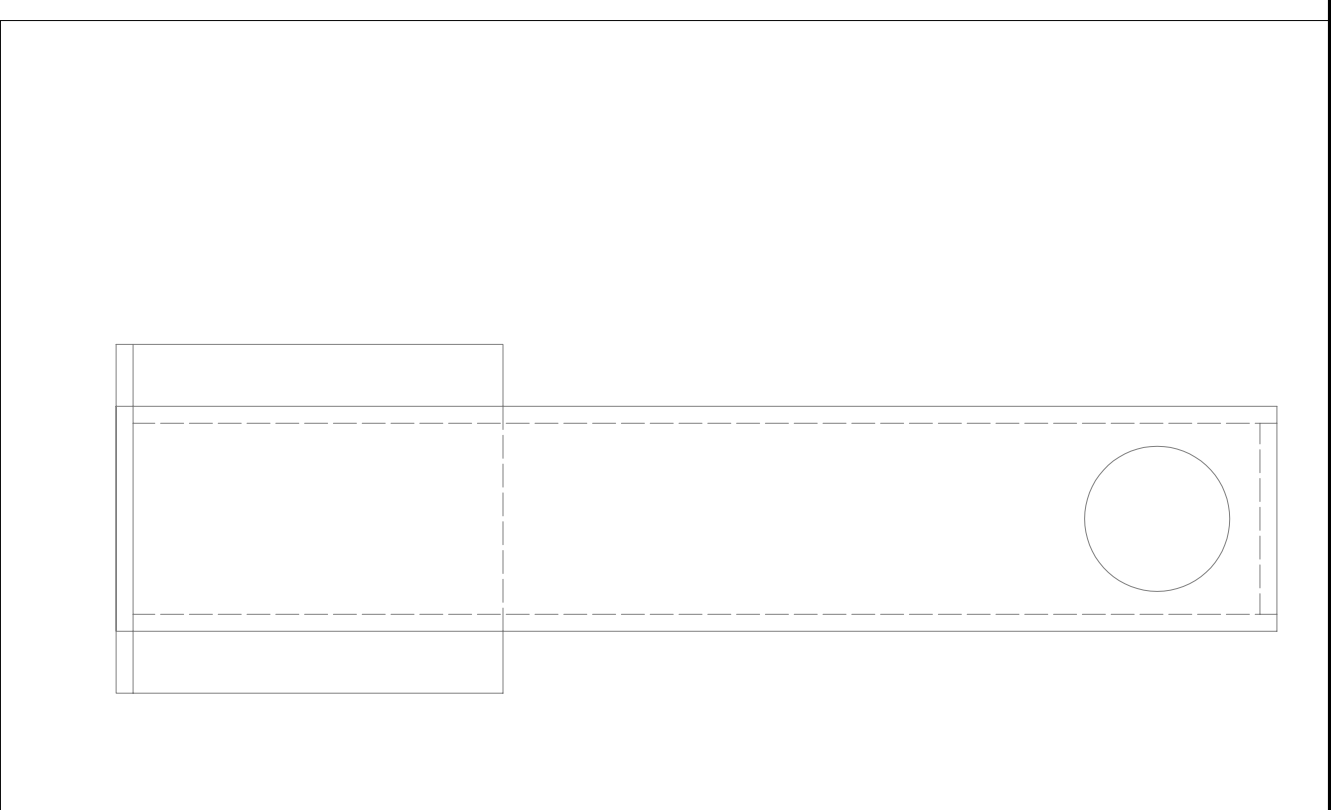
APPROVED: SHEET NO.:

DATE:

FILE No.:

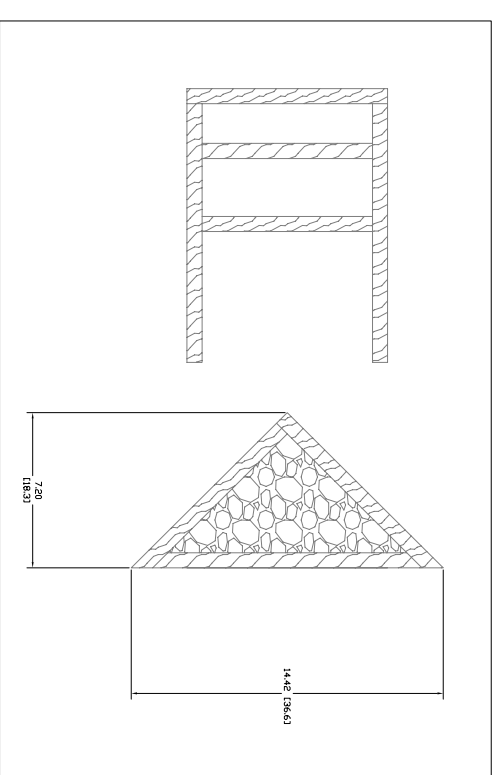
NOTES:

- 1) WOOD IS ASSUMED TO BE 0.7" (17.8mm) THICK. THIS IS STANDARD 3/4" PLY IN NORTH AMERICA.
- 2) UNSPECIFIED ANGLES ARE 90 OR 45 DEGREES



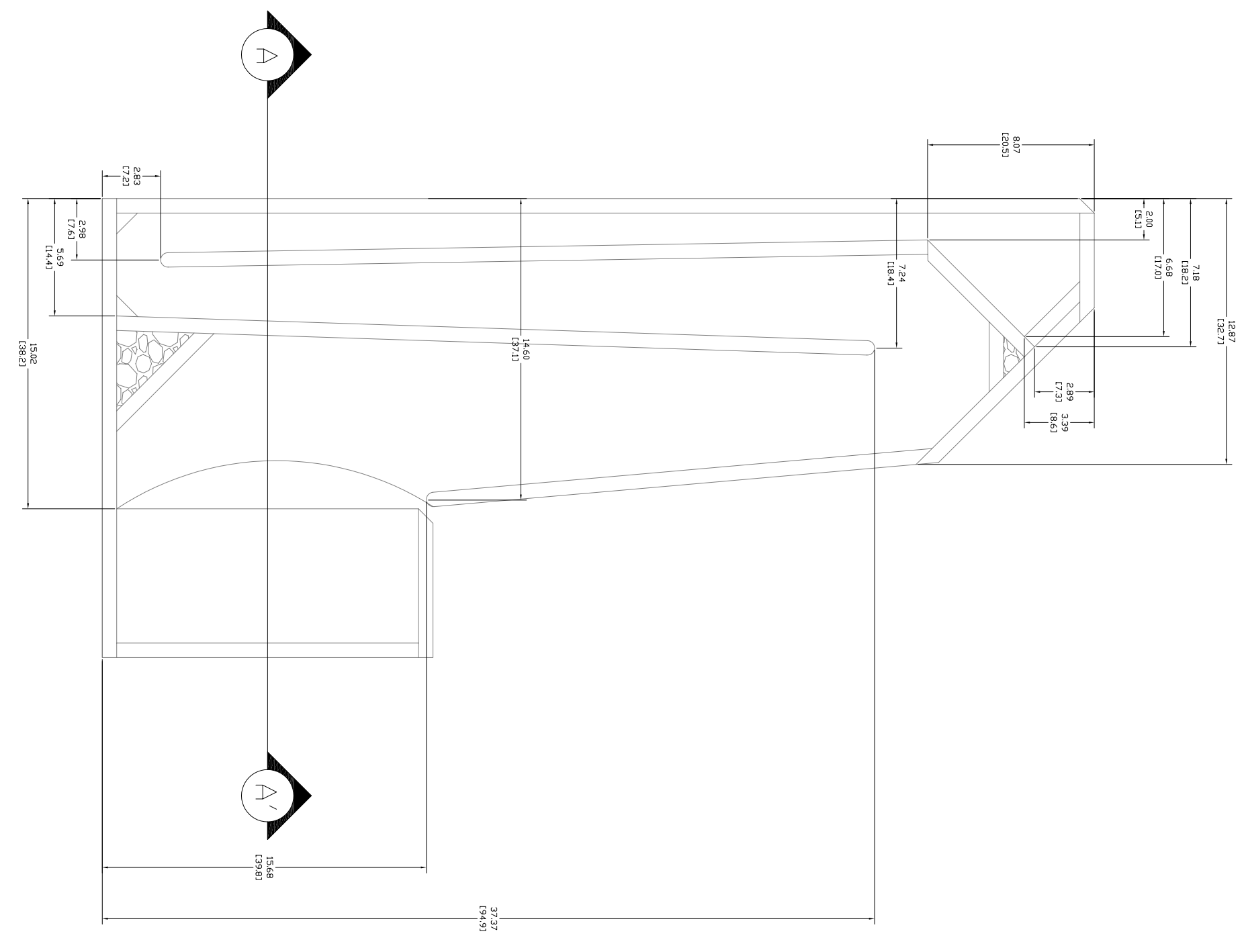
FRONT VIEW

SCALE: NTS



SECTION A-A'

SCALE: NTS



SIDE VIEW CROSS SECTION

SCALE: NTS

CONSULTANT:

PROJECT TITLE:

AUSTIN REV G: BLH  
FOR FOSTEX FE166E

DRAWING TITLE:

SCALE: GRAPHIC SCALE:

DRAWN BY: CHECKED BY: LST PLOT DATE:

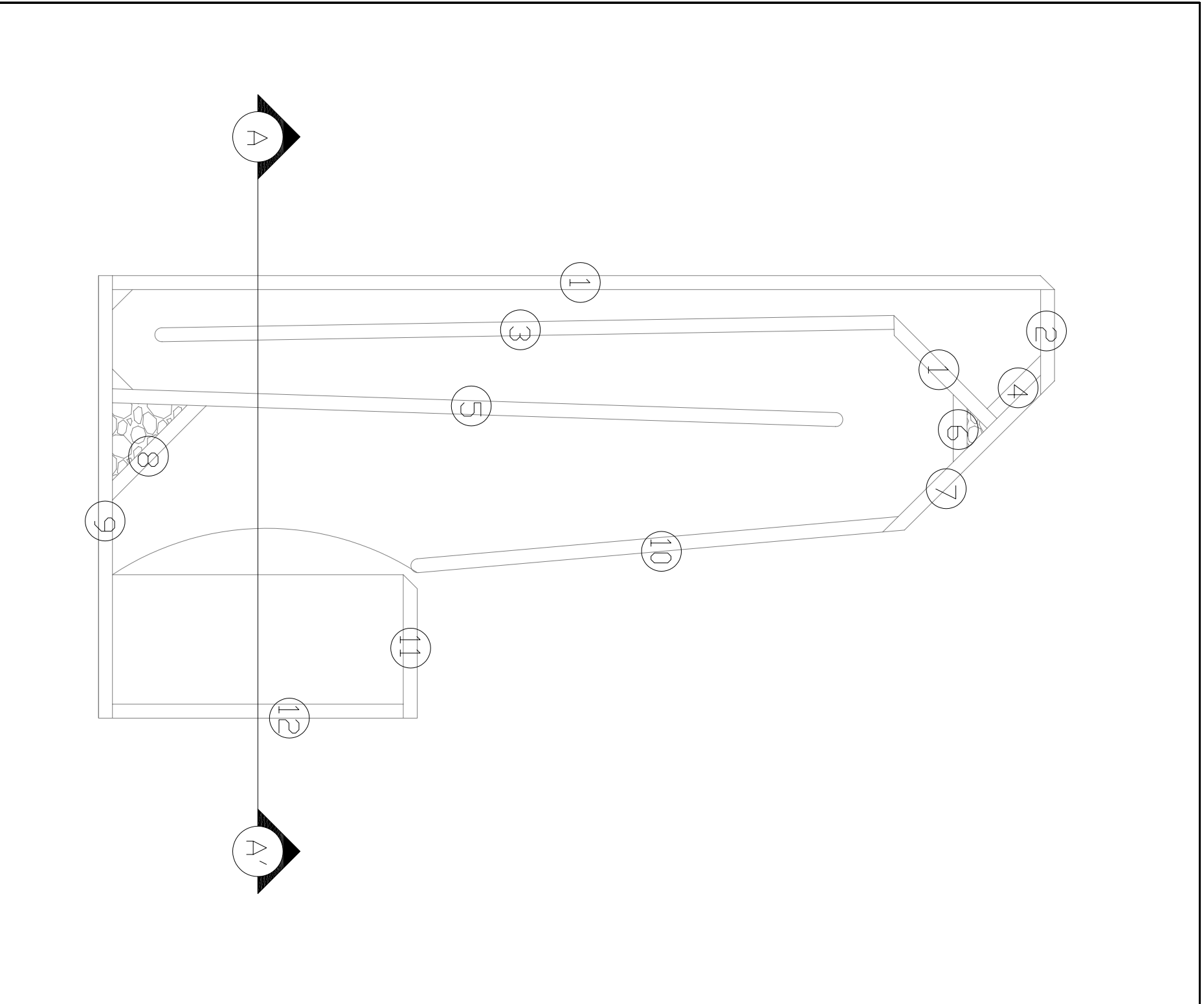
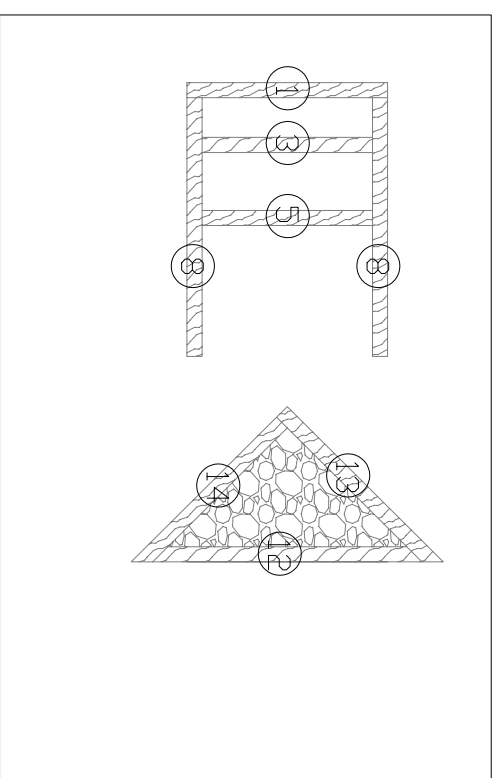
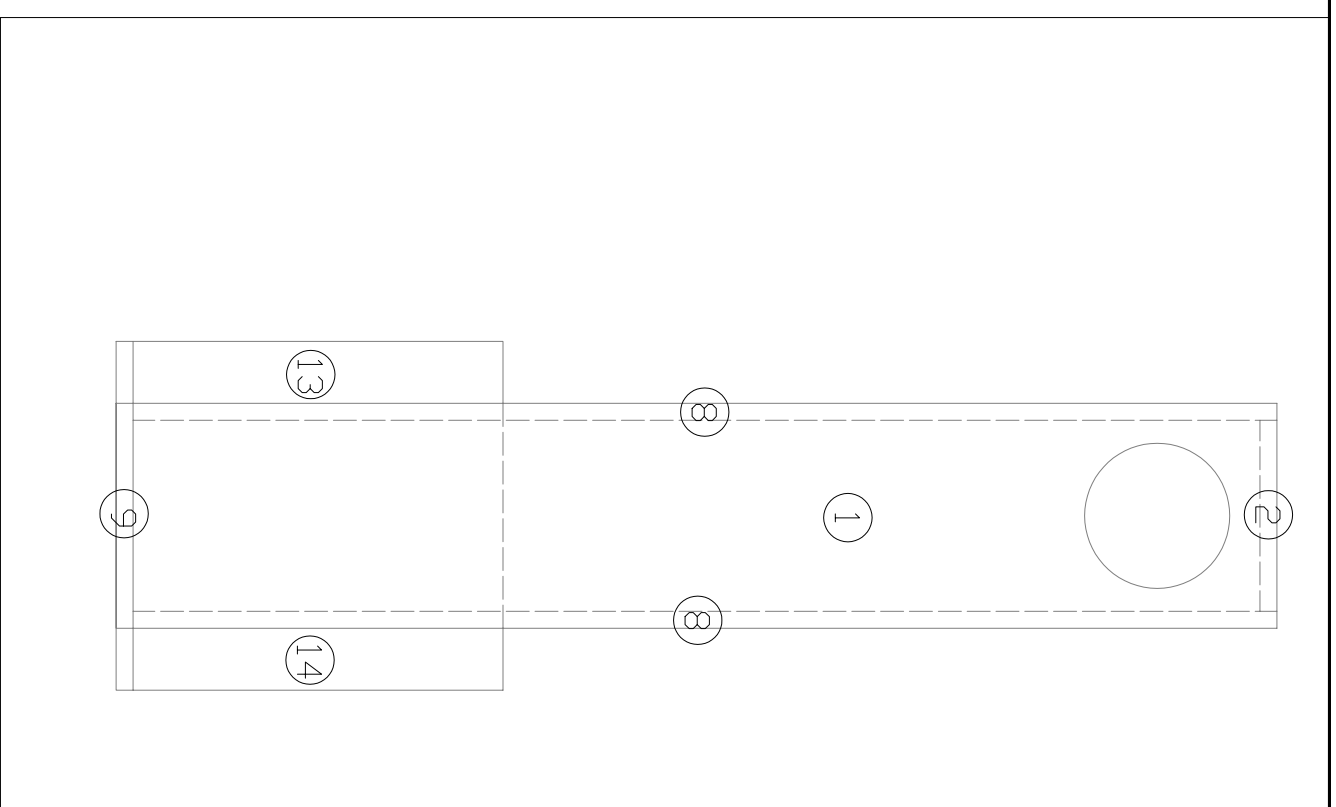
APPROVED: SHEET No.:

DATE:

FILE No.:

NOTES:

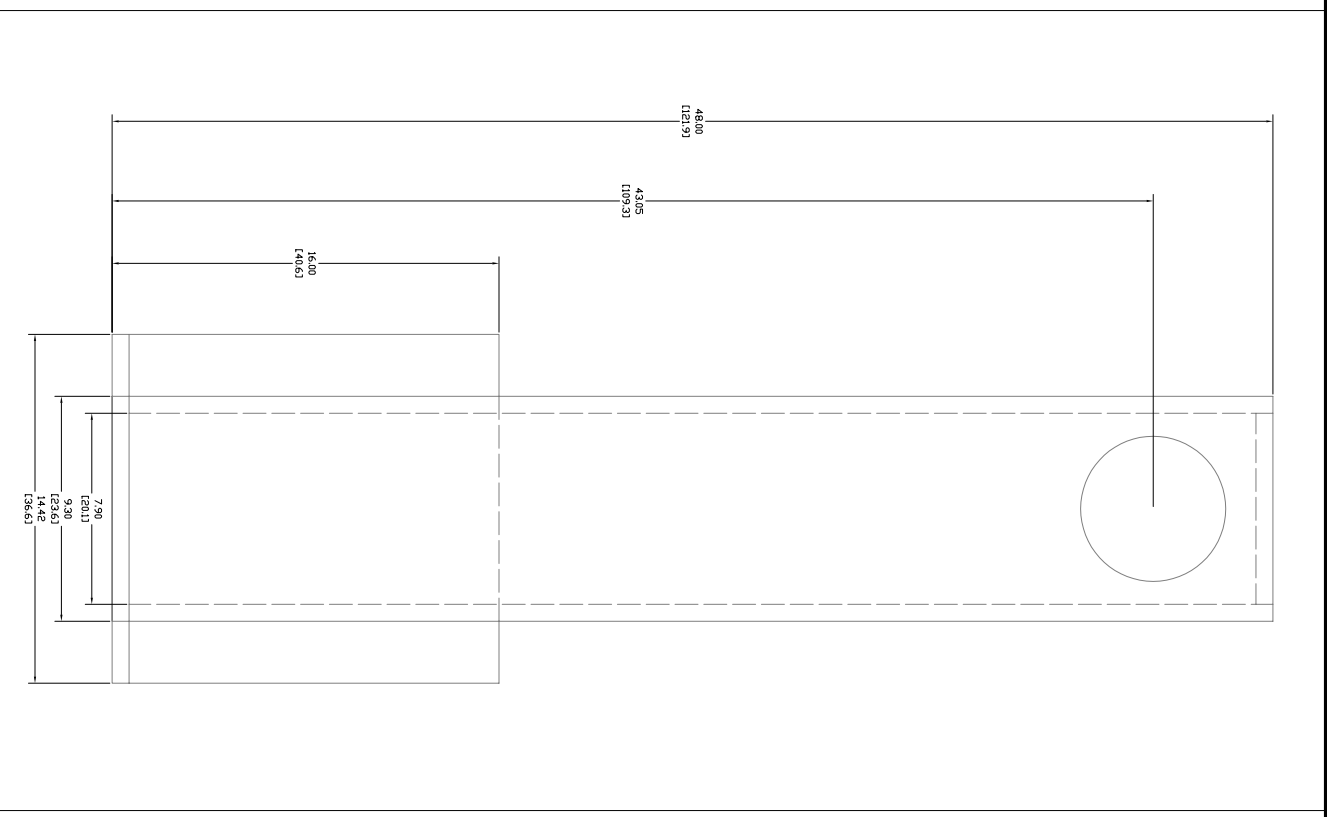
- 1) WOOD IS ASSUMED TO BE 0.7" (17.8mm) THICK. THIS IS STANDARD 3/4" PLY IN NORTH AMERICA.
- 2) UNSPECIFIED ANGLES ARE 90 OR 45 DEGREES



CONSULTANT:		
PROJECT TITLE: AUSTIN REV G: BLH FOR FOSTEX FE166E		
DRAWING TITLE:		
SCALE:	GRAPHIC SCALE:	
DRAWN BY:	CHECKED BY:	LAST PLOT DATE:
APPROVED:	SHEET No.:	
DATE:		
FILE No.:		

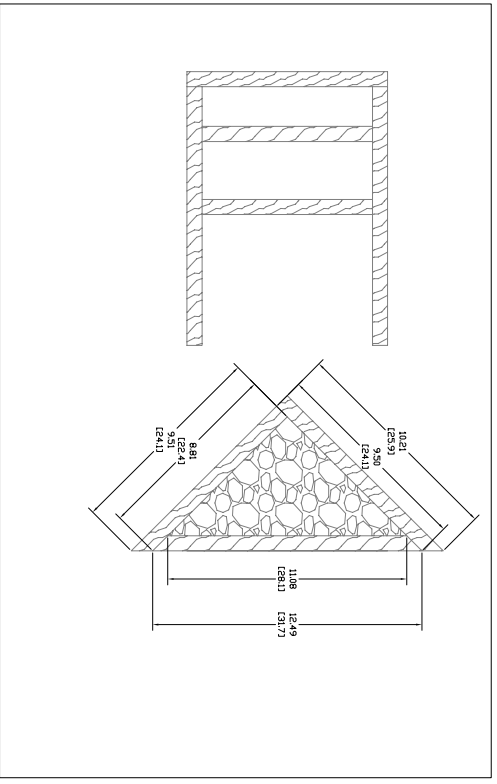
NOTES:

- 1) WOOD IS ASSUMED TO BE 0.7" (17.8mm) THICK. THIS IS STANDARD 3/4" PLY IN NORTH AMERICA.
- 2) UNSPECIFIED ANGLES ARE 90 OR 45 DEGREES



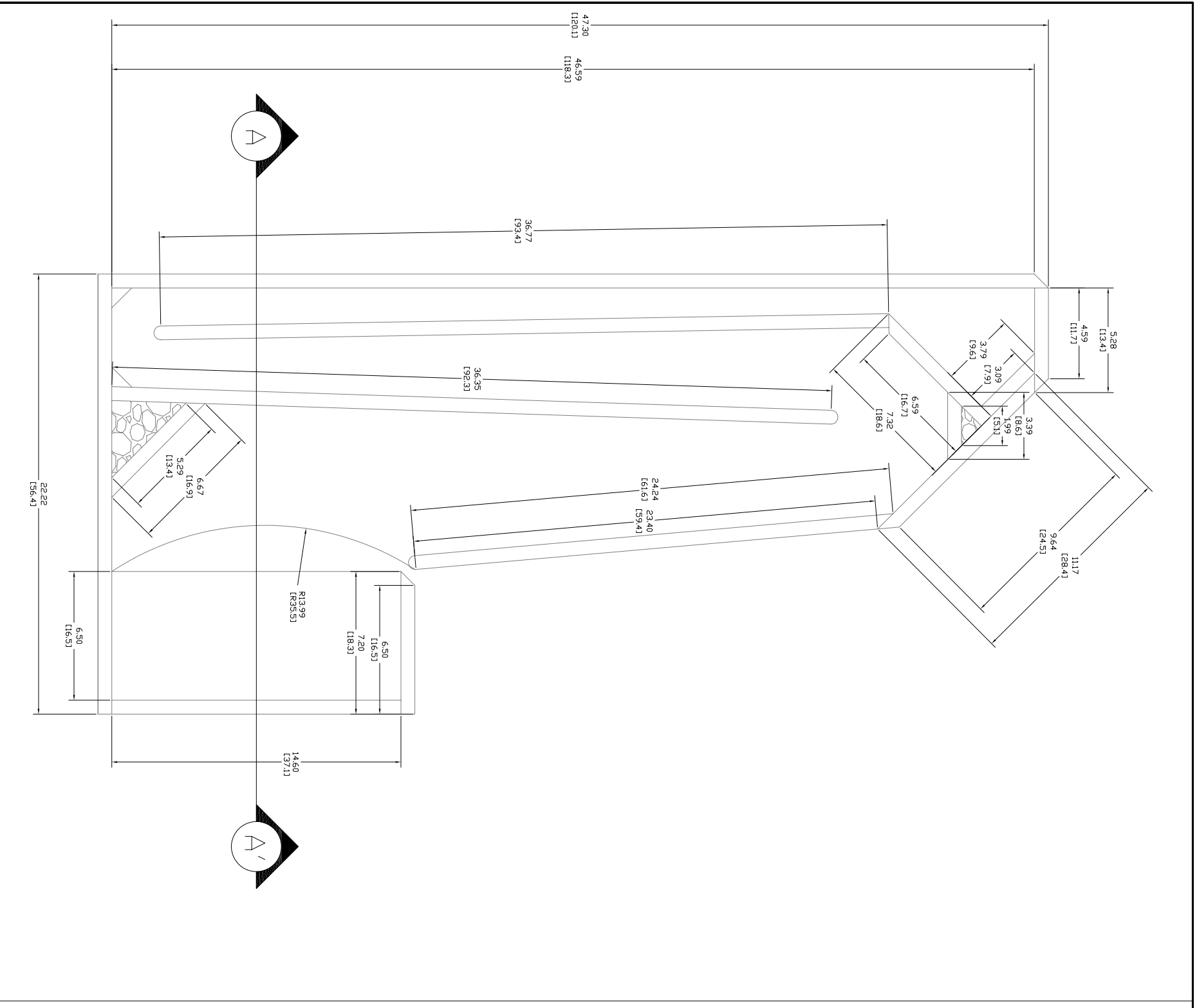
FRONT VIEW

SCALE: NTS



SECTION A-A'

SCALE: NTS



SIDE VIEW CROSS SECTION

SCALE: NTS

CONSULTANT:		
PROJECT TITLE: AUSTIN REV G: BLH FOR FOSTEX FE166E		
DRAWING TITLE:		
SCALE:	GRAPHIC SCALE:	
DRAWN BY:	CHECKED BY:	LIST PLOT DATE:
APPROVED:		SHEET No.:
DATE:		
FILE No.:		